



The Pensacola District Link

July / August 2008

Michael G. Roberts, District Superintendent

Mary Hernandez, Administrative Assistant

New Clergy Appointments

The complete list of appointments may be found at www.awfumc.org/ac2008.



***“Wherefore...let us run with patience the race that is set before us.”
- Hebrews 12:1***

Congratulations, Pensacola District “Long-Timers”!

- ☆ Rev. Janet Lee on 26th year at Century UMC
- ☆ Rev. Jack deJarnette for 19 years at Perdido Bay UMC
- ☆ Rev. John Webb on 19th year at Pace First UMC
- ☆ Rev. Stuart Worth on 12th year at Cokesbury UMC - Associate
- ☆ Rev. Rurel Ausley on 11th year at Niceville First UMC
- ☆ Rev. George McClure on 10th year at Annie Jones UMC
- ☆ Rev. Rodney Smith on 10th year at New Hope UMC

Congratulations, new retirees!

- ☆ Rev. Dr. Charles Avery
- ☆ Rev. Johnny Johnson, Jr.
- ☆ Rev. Richard Perkins
- ☆ Rev. James Ross
- ☆ Rev. Dann Ward

Congratulations, new full elders!

- ☆ Rev. Alan Gantzhorn
- ☆ Rev. Kevin Kelly
- ☆ Rev. Geoffrey Lentz
- ☆ Rev. David McAlister
- ☆ Rev. Jean W. Smith

Congratulations, new ordained deacon!

- ☆ Rev. Nancy Hart

Congratulations, new probationary elders!

- ☆ Rev. Nicole Christopher
- ☆ Rev. Sean Peters
- ☆ Laura Weant

Welcome, new pastors!

- ☆ Rev. David Edwards
- ☆ Rev. Norman Brown
- ☆ Rev. Curtis Huffman
- ☆ Rev. Riley Richardson
- ☆ Rev. David W. Cook
- ☆ Rev. Jesse Evans
- ☆ Rev. Mike Sigler
- ☆ Rev. Jack Kale
- ☆ Rev. Dr. Herb Sadler
- ☆ Rev. Darren McClellan
- ☆ Rev. Kevin Krist
- ☆ Rev. Jean Smith
- ☆ Rev. Thomas Smith
- ☆ Rev. Ron Bearden
- ☆ Rev. Bobbie Ellisor
- ☆ Rev. John Bonner
- ☆ Rev. Jack deJarnette
- ☆ Rev. Ginger Richardson
- ☆ Rev. John Richardson
- ☆ Rev. Connie Farnell
- ☆ Rev. Nicole Christopher

New appointment

- Bellview UMC
- Elizabeth Chapel/Cottage Hill Charge
- Gonzalez UMC
- Myrtle Grove UMC
- Pineview UMC
- Ensley UMC
- First UMC in Fort Walton Beach
- Gulf Breeze UMC
- Gulf Breeze UMC
- Perdido Bay UMC
- St. Andrew UMC in Pensacola
- St. Mark UMC in Pensacola
- St. Mark UMC in Pensacola
- St. Paul UMC in Gulf Breeze
- Trinity UMC in Fort Walton Beach
- Demopolis District Superintendent
- Incapacity Leave
- Demopolis District
- Demopolis District
- Mobile District
- “On Loan” to the Baltimore Washington Conference-

Former appointment

- In Mobile District
- Bellview UMC
- Gulf Breeze UMC
- Gonzalez UMC
- Cottage Hill UMC
- Pineview UMC
- In Montgomery-Opelika District
- In Dothan District
- Dothan District Superintendent
- St. Mark UMC in Pensacola
- In Mobile District
- In Mobile District
- In Mobile District
- In Montgomery-Prattville District
- St. Paul UMC in Gulf Breeze
- Trinity UMC in Fort Walton Beach
- Perdido Bay UMC
- Elizabeth Chapel UMC
- Elizabeth Chapel UMC
- Ensley UMC
- Severna Park UMC - Associate

We're having a Hawaiian Luau!

Come to the Pensacola District's annual

Clergy Family Picnic Thursday, July 10 - 4:00 p.m. at Asbury Place



Great fun for everyone - REALLY!!!

- Limbo contest
- 16 foot water slide
- Playground and nursery for younger family member
- and more fun events!

This is a *CASUAL* event. Wear your favorite Luau clothes or come in picnic attire. (This includes pastors!) Bring your lawn or lounge chairs - and a swimsuit if you dare!

The District Office will provide the meat.

Pastors are asked to bring a covered dish.
**NEW PASTORS, BRING ONLY
YOUR FAMILIES AND YOURSELF!**
(Don't forget the swimsuits!)

Asbury Place - Cokesbury UMC is at
5725 North 9th Avenue in Pensacola
(850-476-5818).



What's News

Moving pastors, do we have your compensation report form??? They need to be in the district office ASAP.

District Superintendent Mike Roberts recently wrote
District Pastors/Churches:

“After a recent conversation with Janet Westlake, who is working with the area Habitat for Humanity, I would like to encourage you to think seriously about helping to build a Habitat home in your subdistrict area. With churches working together, the Pensacola District could easily provide four new homes for needy families during this Conference year. Please be in prayerful consideration of this project. Within the next few weeks either Janet Westlake or a representative from your subdistrict will be contacting you.”

This note included a list of churches by subdistrict (recently realigned). If you need the list, it is posted on the “From the D.S.” page at <http://umcpensacoladistrict.org>.

A team will be going to Costa Rica August 9-16. This is being coordinated by District Missions Coordinator Carl Dickerson. Team members will sort books and deliver them to school and community libraries, an orphanage, and Methodist Church-sponsored schools and community libraries. The cost is \$800 plus airfare. The \$800 covers lodging, meals, in-country transportation and some sightseeing opportunities. If you are interested in missions please e-mail Carl at cad_55@yahoo.com or his Administrative Assistant, Janet Westlake, at (850) 791-3385.

If you need Lay Speaking forms or training info, visit the website of Pensacola District Lay Speaking Ministries, <http://www.gbgm-umc.org/pcolalayspmin/>.

The IRS has increased the mileage rate for July 1st through December 31st. It is not unusual for them to update the rate each fall, but this one is early due to rising fuel costs and other factors such as insurance and depreciation. For details visit the Newsroom section at www.irs.gov.

Are your members choosing between gas and choir? The General Board of Discipleship article “Inflation, Worship, and Community” posted on the Worship section at their website gives insight on how the economy may effect individuals and churches and what churches can do. http://www.gbod.org/worship/default.asp?act=reader&item_id=46436

Can you imagine a church without tithing? **Check out Niceville First UMC's video** “No More Tithing” at www.ourchurchvideos.com.

Pensacola United Methodist Community Ministries needs YOU! With our ever growing ministries, we are in need of volunteers who can help us a few hours a week. We currently need someone who can help in the food pantry and clothes ministry. We also have need of someone with clerical skills. Come join us as we share Christ with the needy in our community. Our service hours are Monday through Thursday from 9 to 11:30 a.m. If you can give one morning a week it would be such a blessing to us!! Please call me at (850) 554-9444.

- Rev. Joe Mullen, Director, PUMCM

Many of you have asked about response to the Midwest flooding. We have had no official request for volunteers as of yet. Tentatively we are looking at putting a AWF Conference team together for the week of July 14. If you have interest and responders, contact me at (251) 968-2411 or amelia@gulfshoresumc.org. Please send financial donations to UMCOR Advance #901670.

- Amelia Fletcher, AWFC Disaster Response Coord. (6/25/08)

The recent Room to Grow appeal brought in \$580. Your support of the Room to Grow Club is a vital part of the mission work of the Pensacola District Board of Missions. Your gift of \$25, over and beyond what you give to your local church, greatly helps the Board in our mission to establish new churches in the District and to aid in revitalization efforts in our local churches. To make a donation please make checks payable to **Room to Grow** and send to The Pensacola District Office, P.O. Box 2727, Pensacola, FL 32513-2727. Thank you for your support.

Thank you to New Hope UMC for paying 100% on apportionments early!!!! As of May 31, District Churches who are ahead of schedule in payments are Aldersgate, Bagdad, Jay, Milton First, New Bethel, New Hope, and Niceville First. Those who are on target (41.67% as of May 31) are Clear Springs, Mae Edwards, and Woodbine. Several churches have paid nothing. For apportionment reports visit <http://umcpensacoladistrict.org>. Here is a May 31st summary by district:

- 39% Demopolis District
- 37% Montgomery-Prattville District
- 36% Dothan District
- 31% Marianna-Panama City District
- 30% Montgomery-Opelika District
- 26% Baypines District
- 25% Pensacola District
- 17% Mobile District

Ray Buckley will speak at the **Bishops Convocation on Preaching September 29-October 1st** at the Grand Hotel in Point Clear, AL. Visit www.awfumc.org for details. The topic will be “The Art of Storytelling.”

Pensacola District Calendar

Visit www.awfumc.org for more events and details - with links to flyers, brochures, and registration forms.

July 2 - The District Committee on Church Locations and Building will meet at the district office at noon. The meeting was requested by St. Paul-Pensacola, Niceville First, and Latham Chapel.

July 4 - Clear Springs UMC invites you to celebrate Independence Day with them. Beginning 6:30 p.m., they will provide free hot dogs, chips, drinks, and snow cones - and at dark a Fireworks Extravaganza.

July 10 - This year's District Picnic will be a Luau 4 p.m. at Asbury Place - Cokesbury UMC. All clergy and their families are invited. Supper is covered dish.

July 11 - The Quarterly Membership Report is due in the District Office. The form and instructions are on the "Quarterly Report" page at the Pensacola District Website.

July 12 - St. Paul UMC-Pensacola will have a yard sale 7 a.m.-1 p.m. at 400 W. Gadsden Street. Items on sale will include pews, tables, chairs, dishes, stove and lots more.

July 13-20 - The Southeastern Jurisdiction Conference will be held at Lake Junaluska, NC. www.sejumc.org/

July 20-24 - Five days of rest, renewal, and creative insight for ministry await you at SOULfeast, to be held at Lake Junaluska, NC. Visit www.upperroom.org/soulfeast.

July 22 - The Committee on Ordained Ministry will meet at the Gadsden Street UMC library at 9:30 a.m. and begin interviews 10 a.m. Chairperson is Rev. Bob Bailey.

July 24-26 - The UMW Cooperative School of Christian Mission will be held at Blue Lake. Coordinator is Guthrie Childs, gchilds@zebra.net.

July 25-26 - Lay Speaker training will be held at Loxley UMC, sponsored by Baypines District Lay Speaking.

July 25-26 - The Beginning Pastor's Workshop will begin 10 a.m. at Huntingdon College, Montgomery, led by Rev. Sara Shaver, sara@capitolheightsumc.org.

July 30 - The Scholarship Committee of the AWF U.M. Foundation will meet 10 a.m. at Gadsden Street UMC.



Cottage Hill UMC, Cantonment, FL

August 1 - District Admin. Assistants will meet at the Baypines District Office.

August 7-8 - A Willow Creek Association Leadership Summit will be held at Gulf Breeze UMC. Visit www.willowcreek.com or contact Jackie Bell at jbelle@lottlaw.com.

August 11-15 - Older Adult Ministries Conference will be held at Lake Junaluska, North Carolina. Call (800) 482-1442 or visit www.lakejunaluska.com.

August 14 - Dr. John Ed Mathison will lead a workshop at Whitfield UMC in Montgomery on the insights and program of his book *Transformed Giving: Realizing Your Church's Full Stewardship Potential*. Coordinator is Roberts Sims, simswhitumc@bellsouth.net.

August 14 - Children's Directors will meet 10 a.m.-3 p.m. at Auburn UMC. Lunch costs \$6. Contact Rev. Leigh Meekins at leigh@awfumc.org or (888) 873-3127.

August 18-19 - The Cabinet will meet at Blue Lake.

August 21 - Lee Frailie will lead a Finance Seminar at Evergreen First UMC to address specific needs and questions of clergy on such topics as budgeting, debt management, investing fundamentals, investing for retirement, and life insurance (.5 CEU). Contact Zanatta Hagan of the Pastoral Care and Counseling Training Center, (800) 258-6474, (334) 793-0686 or umc@pccatawf.org.

August 22-23 - Disciple training will be conducted at Christ UMC-Mobile. Disciple I will be taught on the 22nd, and Disciple II, III, and IV will be taught on the 23rd.

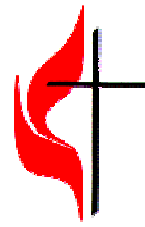
September 6 - U.M. Women District Annual Day will be 8:30 a.m. at St. Andrew UMC. Register by August 30.

September 13 - Diana Hynson will lead a "Teaching and Learning" seminar at Daphne UMC, 9 a.m.-noon. Call (888) 873-3127 or e-mail traci@awfumc.org. The seminar will be repeated September 14 in Montgomery.

October 11 & 18 - Lay Speaker training will be held at Gonzalez UMC, sponsored by Pensacola District Lay Speaking Ministries.



Lay Speaking Ministry Training



Offered by the Pensacola District Committee on Lay Speaking

October 11th & 18th, 2008

Gonzalez United Methodist Church
2026 Pauline Street, Cantonment, FL 32533

Basic Course

A fundamental how-to orientation on Lay Speaking Ministry. The course is based on the theme *“Called to Proclaim the Gospel”* and includes sessions on Leading Worship, Preaching, Witnessing, Teaching, Service Leadership, Personal Faith and Personal Lifestyle.

Refresher Course

(October 11th Only)

Leading With Purpose – Provides practical resources enabling leaders to create environments for faith formation, model Christian spiritual development grounded in the means of grace, and equip all people to be in ministry in their daily lives.

Advanced Courses

(Prior completion of the Basic Course required)

Lay Speakers Lead in Mission Outreach—Lay speakers learn the role of mission outreach in relationship to the vision and ministry of the church.

Lay Speakers Lead Evangelism – Lay speakers learn how to share their faith by telling and doing.

~ Class Size is limited to 20 students! Enroll early! ~

Cost: \$ 35 – Basic & Advanced Courses. (includes textbooks & lunch on both Saturdays)
\$ 15 – Refresher Course (includes text book & lunch on first Saturday)

Have questions? Need more info? Contact Kurt Burgess at (850) 586-5566, or via email: saved2serve1@cox.net

Check Out Our Newly Redesigned Web Site! <http://www.gbgm-umc.org/pcolalayspmin/>

Please register me for the following class:

Basic Course

Advanced Course
“Evangelism”

Refresher Course
“Leading With Purpose”

Advanced Course
“Mission Outreach”

NAME: _____

PHONE: _____

ADDRESS: _____

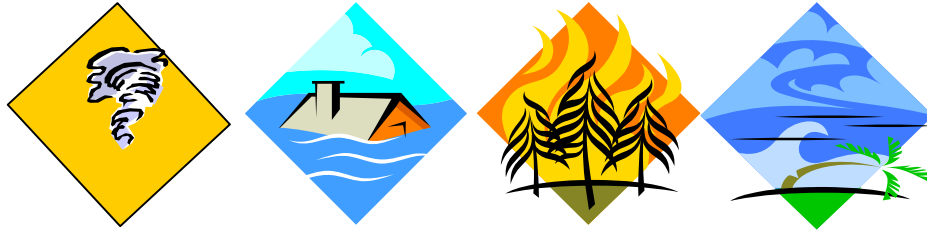
EMAIL: _____

CHURCH: _____

Mail this form, along with your check payable to
“Pensacola District Lay Speaker Fund” to:

Beverly Maddox, Registrar
34171 Nims Fork Rd
Robertsdale AL 36567

Deadline for Registration is October 1, 2008



To Clergy and Lay Leaders of the Local Church:

"Disaster Prep Top 10" Questions

In the event of a natural disaster. . . .

1. How will you contact your membership, particularly if power or phone service is disrupted?
2. How will you help yourself and your congregation evacuate or prepare if the storm threatens your area?
3. How will you secure and back up your church records?
4. How will your church be a "mission station"?
5. How will you partner with neighboring churches?
6. Do you have adequate insurance for all church facilities, including parsonage, and do you know how to contact your insurance carrier?
7. Clergy, is your personal emergency contact information (including your cell number and your e-mail address) up-to-date with the conference and your district office?
8. Do you know the list of emergency items and essential supplies to request/collect before and following a storm?
9. How will you tell your story?
10. How are you preparing for the next disaster/storm season?

*When you have answered these 10 questions
you are well on the way to forming your local church disaster response plan!*

For help or questions please contact your Pensacola District Disaster Response Coordinator:

**Rev. Alan Gantzhorn c/o Aldersgate United Methodist Church, P.O. Box 66, Molino, FL 32577-0066
Church Phone: (850) 587-5294 ♦ E-mail: flubird10@hotmail.com**

Apportionment Payments through May 31, 2008

	All AWFC Apport'D	All AWFC Pd 05/31/08	All AWFC % Pd	Dist Adm Apport'd	Dist Adm Pd 05/31/08	Dist Adm % Pd	Dist Msns Apport'D	Dist Msns Pd 05/31/08	Dist Msns % Pd	Non-Appor Giving	Appor + NonAppor
Aldersgate	22,675.00	11,300.00	49.83%	441.00	441.00	100.00%	392.00	392.00	100.00%	682.00	11,982.00
Allen Memorial	22,088.00	1,350.49	6.11%	429.00	-	0.00%	382.00	-	0.00%	-	1,350.49
Annie Jones	2,153.00	-	0.00%	42.00	-	0.00%	37.00	-	0.00%	-	-
Bagdad	13,927.00	7,985.00	57.33%	271.00	271.00	100.00%	242.00	242.00	100.00%	-	7,985.00
Baker First	3,614.00	647.63	17.92%	70.00	-	0.00%	63.00	-	0.00%	-	647.63
Bellview	26,331.00	6,584.00	25.00%	513.00	457.00	89.08%	457.00	513.00	112.25%	-	6,584.00
Byrneville	9,223.00	3,253.00	35.27%	180.00	180.00	100.00%	160.00	160.00	100.00%	-	3,253.00
Century	6,818.00	2,530.00	37.11%	132.00	132.00	100.00%	118.00	118.00	100.00%	975.00	3,505.00
Christ	27,784.00	4,000.00	14.40%	540.00	-	0.00%	481.00	-	0.00%	-	4,000.00
Chumuckla	18,461.00	4,250.00	23.02%	359.00	-	0.00%	319.00	-	0.00%	-	4,250.00
Clear Springs	6,877.00	2,865.40	41.67%	134.00	134.00	100.00%	119.00	119.00	100.00%	-	2,865.40
Cokesbury	253,934.00	16,243.05	6.40%	4,940.00	4,940.00	100.00%	4,398.00	4,398.00	100.00%	14,174.18	30,417.23
Cottage Hill	8,309.00	-	0.00%	162.00	-	0.00%	144.00	-	0.00%	-	-
Crestv First	72,825.00	21,847.50	30.00%	1,418.00	425.40	30.00%	1,262.00	387.60	30.71%	280.00	22,127.50
Destin	182,627.00	58,131.00	31.83%	3,549.00	1,189.00	33.50%	3,160.00	1,056.00	33.42%	-	58,131.00
Elizabeth Chapel	12,416.00	4,140.00	33.34%	242.00	-	0.00%	215.00	-	0.00%	-	4,140.00
Ensley	14,366.00	3,529.00	24.56%	280.00	280.00	100.00%	249.00	249.00	100.00%	375.00	3,904.00
Farm Hill	16,583.00	-	0.00%	323.00	-	0.00%	288.00	-	0.00%	-	-
Ferry Pass	28,783.00	4,017.00	13.96%	560.00	560.00	100.00%	499.00	-	0.00%	39.26	4,056.26
FWB First	177,534.00	57,753.30	32.53%	3,450.00	1,380.00	40.00%	3,072.00	1,228.80	40.00%	971.00	58,724.30
Gadsden Street	46,810.00	540.90	1.16%	911.00	286.20	31.42%	811.00	254.70	31.41%	1,803.00	2,343.90
Gonzalez	56,627.00	13,631.25	24.07%	1,102.00	459.23	41.67%	981.00	408.75	41.67%	36.00	13,667.25
Gulf Breeze	512,851.00	125,000.00	24.37%	9,974.00	9,974.00	100.00%	8,880.00	8,880.00	100.00%	6,109.25	131,109.25
Jay	16,685.00	9,120.00	54.66%	324.00	324.00	100.00%	289.00	289.00	100.00%	1,565.00	10,685.00
Lathram Chapel	5,850.00	-	0.00%	114.00	-	0.00%	102.00	-	0.00%	-	-
Lillian	44,400.00	14,199.75	31.98%	864.00	-	0.00%	770.00	-	0.00%	-	14,199.75
Mae Edwards	6,259.00	2,608.57	41.68%	122.00	50.88	41.70%	108.00	45.00	41.67%	623.66	3,232.23
Mary Esther	100,538.00	22,390.00	22.27%	1,953.00	-	0.00%	1,739.00	1,953.00	112.31%	122.00	22,512.00
McDavid	5,655.00	1,763.00	31.18%	110.00	110.00	100.00%	98.00	98.00	100.00%	94.00	1,857.00
Milton First	60,091.00	30,045.50	50.00%	1,169.00	1,169.00	100.00%	1,041.00	1,041.00	100.00%	1,164.30	31,209.80
Mt Carmel	17,229.00	6,350.00	36.86%	336.00	336.00	100.00%	299.00	299.00	100.00%	3832 17/20	10,182.85
Myrtle Grove	89,805.00	22,726.46	25.31%	1,748.00	-	0.00%	1,556.00	-	0.00%	2,541.00	25,267.46
Navarre	143,117.00	20,677.63	14.45%	2,788.00	2,788.00	100.00%	2,482.00	-	0.00%	2,947.75	23,625.38
New Bethel	7,044.00	4,226.40	60.00%	137.00	82.20	60.00%	122.00	73.20	60.00%	376.00	4,602.40
New Hope	4,438.00	4,438.00	100.00%	75.00	75.00	100.00%	66.00	66.00	100.00%	-	4,438.00
Niceville First	495,094.00	217,138.50	43.86%	9,612.00	4,806.00	50.00%	8,558.00	4,279.00	50.00%	60,414.97	277,553.47
Pace First	63,277.00	14,500.00	22.92%	1,228.00	1,228.00	100.00%	1,094.00	-	0.00%	-	14,500.00
Pen First	259,876.00	80,256.30	30.88%	5,056.00	2,022.40	40.00%	4,502.00	1,800.70	40.00%	1,699.00	81,955.30
Perdido Bay	124,360.00	47,148.29	37.91%	2,415.00	-	0.00%	2,150.00	-	0.00%	-	47,148.29
Pine Forest	58,122.00	9,431.70	16.23%	1,132.00	-	0.00%	1,008.00	-	0.00%	-	9,431.70
Pineview	15,795.00	1,961.00	12.42%	307.00	307.00	100.00%	274.00	274.00	100.00%	317.00	2,278.00
Richards	37,697.00	7,199.00	19.10%	733.00	723.00	98.64%	653.00	663.00	101.53%	-	7,199.00
Shalimar	228,858.00	61,112.50	26.70%	4,453.00	1,335.90	30.00%	3,964.00	1,189.20	30.00%	2,945.00	64,057.50
St Andrew	31,656.00	-	0.00%	617.00	-	0.00%	550.00	-	0.00%	1,120.00	1,120.00
St Luke	123,878.00	10,000.00	8.07%	2,408.00	-	0.00%	2,144.00	-	0.00%	3,843.00	13,843.00
St Mark-Crestview	24,665.00	6,166.25	25.00%	481.00	120.25	25.00%	428.00	107.00	25.00%	-	6,166.25
St Mark-Pensacola	45,762.00	-	0.00%	890.00	-	0.00%	792.00	-	0.00%	16,100.00	16,100.00
St Paul-Gulf Breeze	71,336.00	2,088.00	2.93%	1,388.00	1,388.00	100.00%	1,236.00	700.00	56.63%	-	2,088.00
St Paul-Pensacola	12,817.00	-	0.00%	249.00	-	0.00%	222.00	-	0.00%	-	-
Trinity	112,529.00	31,508.00	28.00%	2,190.00	-	0.00%	1,950.00	-	0.00%	2,236.00	33,744.00
Warrington	31,344.00	-	0.00%	610.00	-	0.00%	543.00	-	0.00%	1,117.00	1,117.00
Wesley Mem	22,241.00	5,560.22	25.00%	433.00	433.00	100.00%	385.00	385.00	100.00%	353.00	5,913.22
Woodbine	62,637.00	26,097.00	41.66%	1,217.00	-	0.00%	1,083.00	-	0.00%	-	26,097.00
P'COLA DISTRICT	3,866,671.00	1,008,310.59	26.08%	75,181.00	38,407.46	51.09%	66,937.00	31,668.95	47.31%	128,856.22	1,137,166.81

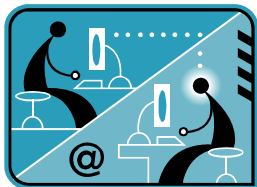
The Pensacola District
of The Alabama-West Florida Conference
United Methodist Church
The Pensacola District Link
PO Box 2727
Pensacola, Florida 32513-2727

**Nonprofit Org.
U.S. Postage
Paid
Pensacola, FL
Permit No. 726**

Phone: (850) 434-0118
Fax: (850) 434-0119
E-mail: office@umcpensacoladistrict.org
Website: <http://umcpensacoladistrict.org>

RETURN SERVICE REQUESTED

**Remember to look for
our announcements to you
at the
Pensacola District website,
<http://umcpensacoladistrict.org>.**



**If you have an announcement
to share with other churches
on our Message Board
e-mail
office@umcpensacoladistrict.org.**



Annual Conference Awards

Rev. John Webb of Pace First UMC was the clergy recipient of the 2008 Denman Evangelism Award. This is the

highest award given to any pastor in our Annual Conference and it goes to the person who consistently demonstrates faithful service within the local church in the area of evangelism.

Mary Esther UMC was recognized at Annual Conference for certification as “A Church for All God’s Children” - the only church certified this year.



*These photos are by
Meredyth Earnest of
AWF Conference
Communications.*